

इंटरनेट

मानक

### Disclosure to Promote the Right To Information

Whereas the Parliament of India has set out to provide a practical regime of right to information for citizens to secure access to information under the control of public authorities, in order to promote transparency and accountability in the working of every public authority, and whereas the attached publication of the Bureau of Indian Standards is of particular interest to the public, particularly disadvantaged communities and those engaged in the pursuit of education and knowledge, the attached public safety standard is made available to promote the timely dissemination of this information in an accurate manner to the public.

“जानने का अधिकार, जीने का अधिकार”

Mazdoor Kisan Shakti Sangathan

“The Right to Information, The Right to Live”

“पुराने को छोड़ नये के तरफ”

Jawaharlal Nehru

“Step Out From the Old to the New”

IS 1361 (1978): Specification for steel windows for industrial buildings [CED 11: Doors, Windows and Shutter]



“ज्ञान से एक नये भारत का निर्माण”

Satyanarayan Gangaram Pitroda

“Invent a New India Using Knowledge”



“ज्ञान एक ऐसा खजाना है जो कभी चुराया नहीं जा सकता है”

Bhartrhari—Nitiśatakam

“Knowledge is such a treasure which cannot be stolen”



BLANK PAGE



IS : 1361 - 1978  
(Reaffirmed 2006)

# *Indian Standard*

## SPECIFICATION FOR STEEL WINDOWS FOR INDUSTRIAL BUILDINGS

( *First Revision* )

Seventh Reprint SEPTEMBER 2007  
( Including Amendment No. 1&2 )

UDC 69.028.2.014.2 : 725.4

© Copyright 1978

BUREAU OF INDIAN STANDARDS  
MANAK BHAVAN, 9 BAHADUR SHAH ZAFAR MARG  
NEW DELHI 110002

# *Indian Standard*

## SPECIFICATION FOR STEEL WINDOWS FOR INDUSTRIAL BUILDINGS

### ( *First Revision* )

Doors, Windows and Shutters Sectional Committee, BDC 11

#### *Chairman*

SHRI T. S. NARAYANA RAO  
93 ' ARUNA ' East Road,  
Basavangudi, Bangalore

#### *Members*

SHRI H. S. ANAND  
SHRI P. N. ANAND ( *Alternate* )  
SHRI J. S. BEDI  
SHRI A. K. SOBTI ( *Alternate* )  
DEPUTY DIRECTOR STANDARDS  
( ARCHITECTURE ), RDSO  
SHRI L. N. DOKANIA

#### *Representing*

EXECUTIVE DIRECTOR ( <i>Alternate</i> )	Anand Industries Ltd, New Delhi
SHRI P. G. GANDHI	Hopes' Metal Windows ( India ) Ltd, Calcutta
SHRI C. A. SHAH ( <i>Alternate</i> )	Ministry of Railways ( Railway Board )
HOUSING BOARD ENGINEER	Federation of Indian Plywood and Panel Industry, New Delhi
EXECUTIVE ENGINEER, CENT- RAL DIVISION ( <i>Alternate</i> )	Swastik Rolling Shutters and Engg Works, Bombay
SHRI H. N. KHAMBATA	Tamil Nadu Housing Board, Madras
DR JOSEPH GEORGE	Godrej & Boyce Mfg Co Ltd, Bombay
DR H. N. JAGADEESH ( <i>Alternate</i> )	Indian Plywood Industries Research Institute, Bangalore
SHRI M. T. KANSE	Directorate General of Supplies and Disposals, New Delhi
SHRI M. K. LAKHANI	Maharashtra Housing Board, Bombay
SHRI K. S. LAULY	Indian Plywood Manufacturing Co Ltd, Bombay
SHRI P. V. MEHTA	Directorate General of Technical Development, New Delhi
SHRI P. N. MEHROTRA	Ministry of Home Affairs
SHRI R. D. MENON	Diana Rolling Shutters ( Madras ), Madras

( *Continued on page 2* )

© Copyright 1978

BUREAU OF INDIAN STANDARDS

This publication is protected under the *Indian Copyright Act* ( XIV of 1957 ) and reproduction in whole or in part by any means except with written permission of the publisher shall be deemed to be an infringement of copyright under the said Act.

## IS: 1361 - 1978

( Continued from page 1 )

<i>Members</i>	<i>Representing</i>
SHRI M. M. MISTRY	National Buildings Organization, New Delhi
SHRI H. K. JAGWANI ( Alternate )	
SHRI J. S. PARMAR	Mysore Commercial Union Ltd, Bangalore
SHRI K. PURKAYASTHA	Indian Aluminium Co Ltd, Calcutta
SHRI R. K. MEHTA ( Alternate )	
SHRI V. P. RAORI	Indian Institute of Architects, Bombay
REPRESENTATIVE	Karnataka Housing Board, Bangalore
SHRI K. G. SALVI	Hindustan Housing Factory Ltd, New Delhi
SHRI K. C. AGARWALA ( Alternate )	
SHRI K. SANKARAKRISHNAN	Kutty Flush Doors & Furniture Co Ltd, Madras
SHRI C. S. DORAIRAJA ( Alternate )	
SHRI A. C. SEKHAR	Forest Research Institute & Colleges, Dehra Dun
SHRI A. S. GULATI ( Alternate )	
SENIOR ARCHITECT, B (I)	Central Public Works Department, New Delhi
SHRI M. S. SIALI	Engineer-in-Chief's Branch, Army Headquarters, New Delhi
SHRI M. V. SATHE ( Alternate )	
SHRI P. K. SINGHLA	Builders' Association of India, Bombay
SHRI T. C. SOLANKI	Indian Metal Window Association, Bombay
SHRI M. P. SHAH ( Alternate )	
SHRI P. N. SRIVASTAVA	The Institution of Engineers ( India ), Calcutta
SHRI G. R. SUNDERAM	Man Industrial Corporation Ltd, Jaipur
SHRI K. R. ANANTHASWAMY ( Alternate )	
SHRI B. K. TIAGI	Central Buildings Research Institute ( CSIR ), Roorkee
SHRI T. N. GUPTA ( Alternate )	
SHRI H. THOMSON	Sitapur Plywood Manufacturers Ltd, Sitapur
SHRI G. W. M. WHITTLE ( Alternate )	
SHRI T. N. TIKKU	Albion Plywood Co Ltd, Calcutta
SHRI D. AJITHA SIMHA, Director ( Civ Engg )	Director General, ISI ( Ex-officio Member )

### *Secretary*

SHRI J. R. MEHTA  
Deputy Director ( Civ Engg ), ISI

**AMENDMENT NO. 1      JULY 1983**  
**TO**  
**IS : 1361-1978   SPECIFICATION FOR STEEL**  
**WINDOWS FOR INDUSTRIAL BUILDINGS**

*( First Revision )*

**Alterations**

( *Page 7, clause 5.2* ) — Substitute the following for the existing clause:

**‘ 5.2 Tolerances —** The manufacturing tolerances of the industrial windows shall be such that the overall dimensions as shown in Fig. 1 shall not vary by more than 3 mm ’.

( *Page 7, clause 6.4* ) — Substitute the following for the existing clause:

**‘ 6.4 Glass panes shall conform to IS : 2835-1977 Specification for flat transport sheet glass ( *second revision* ) or IS : 5437-1969 Specification for wired and figured glass as may be required. All glass panes shall have properly squared corners and straight edges.**

( Page 10, Fig. 3 ) — Substitute the following for the existing figure:

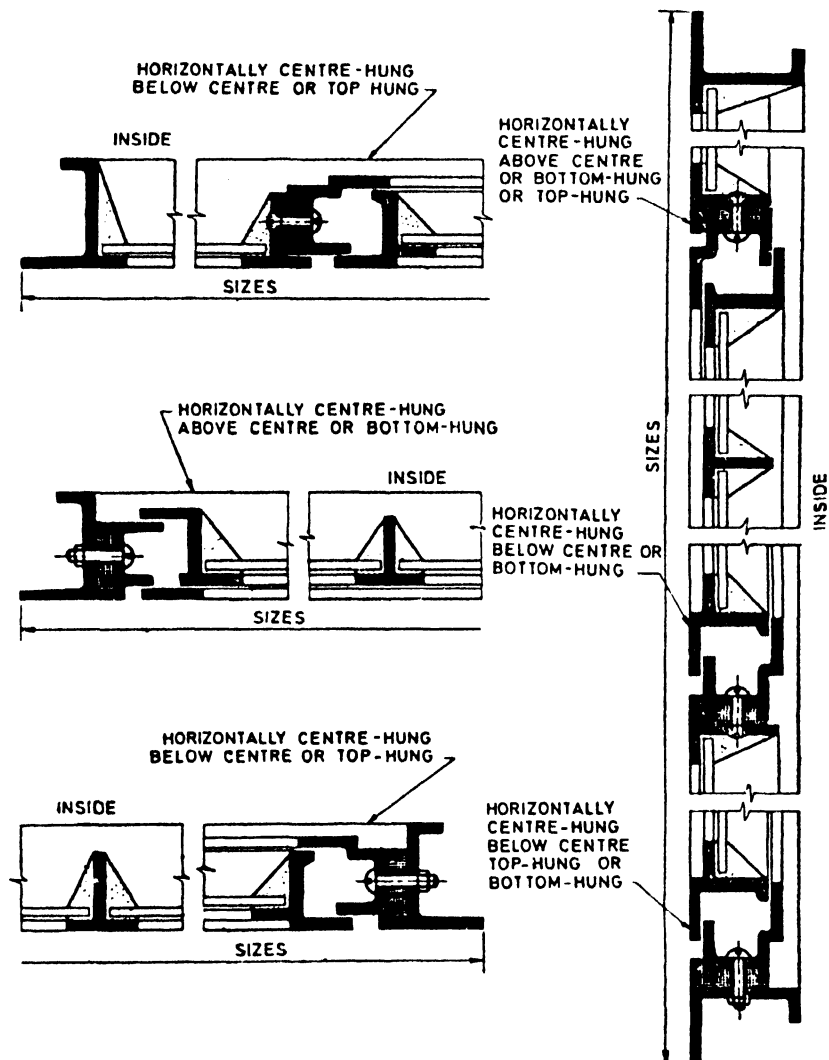


FIG. 3 SECTIONAL DETAILS THROUGH SASHES

( Page 11, clause 8.1 ) — Substitute the following for the existing clause:

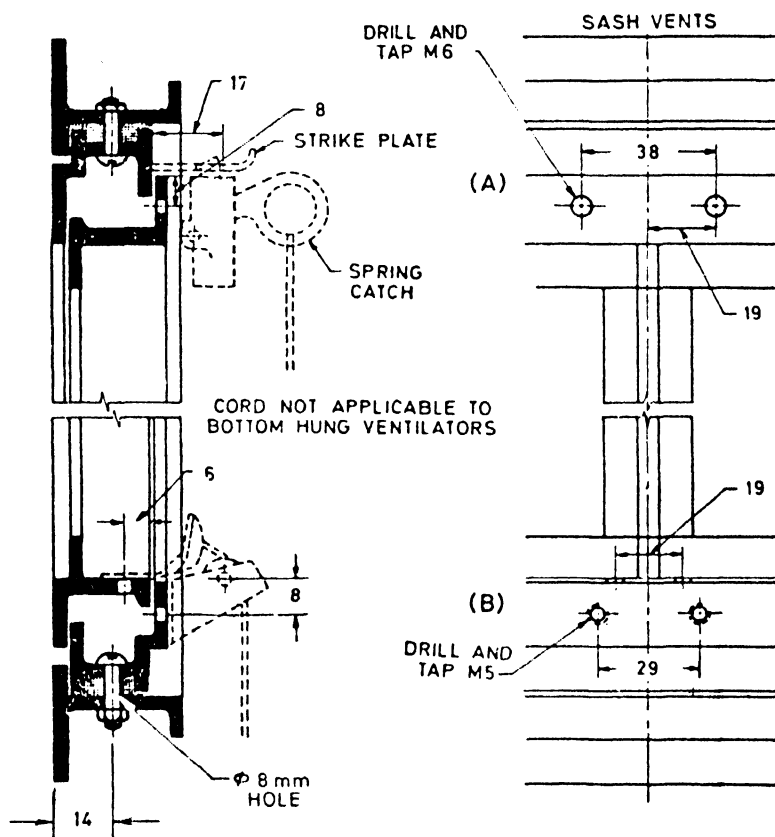
'8.1 Holes for fixing and coupling sashes shall be provided in the web of the outside frame sections ( and of the outer ventilator frame sections



where these occur at the perimeter of the sash ) as shown in Fig. 4. These holes shall be of 8 mm diameter, countersunk and shall be located 14 mm from the outside face of the frame section in position as shown in Fig. 5.

( Page 11, clause 9.5, first line ) — Substitute 'sherardized' for 'standardized'.

( Page 13, Fig. 5 ) — Substitute the following for the existing figure:



- (A) Preparation for spring catch on horizontally pivoted and bottom hung ventilators  
 (B) Preparation for pulley and cord-eye on horizontally pivoted ventilators

**NOTE** — Mastic should be applied to joints where hatching shown.

All dimensions in millimetres.

**FIG. 5 SPRING CATCH, PULLEY AND CORD-EYE**

( *Page 17, clause 9.9* ) — Substitute the following for the existing clause:

‘ 9.9 Two spring glazing clips per pane shall be provided for putty glazing. These shall be made of spring steel to the design shown in Fig. 11.’

( *Page 17, clause 10.1, third line* ) — Substitute ‘ 25 mm ’ for ‘ 20 mm ’.

( *Page 17, clause 11.1, second sentence* ) — Substitute the following for the existing sentence:

‘ Allowance for clearance has already been made while arriving at the sizes of glass panes given in the table.’

### **Addenda**

( *Page 16, clause 9.7* ) — Add the following new matter at the end of 9.7:

‘ Lugs shall be manufactured from 3·15 mm thick mild steel sheet. ’

( *Page 17, clause 9.9* ) — Add the following new clause after 9.9:

‘ 9.10 Sashes may also be prepared for bead glazing made from either 9·5 × 9·5 mm aluminium channel of 1 mm thickness or 9·5 × 9·5 mm pressed steel channel of 0·375 to 0·45 mm thick galvanized sheet. Self-tapping screws shall be used for fixing bead or as an alternative bead fixing may be done with concealed screws. Back putty or ‘U’ shaped rubber channel shall be provided for glazing. No spring glazing clip shall be required for bead glazing. ’

( *Page 17, clause 11.1* ) — Add the following new clause after 11.1:

‘ 11.1.1 Sashes shall be inside glazed and prepared for putty glazing unless otherwise specified. ’

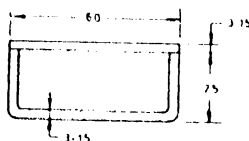
**AMENDMENT NO. 2      MARCH 1986**  
**TO**  
**IS : 1361 - 1978 SPECIFICATION FOR**  
**STEEL WINDOWS FOR INDUSTRIAL BUILDINGS**  
**( First Revision )**

( Page 7, clause 6.3 ) — Substitute the following for the existing clause:

‘ 6.3 Pivots and spring catches shall be of non-ferrous metal. Coupling members for forming composite windows shall be fabricated either from mild steel sheets or mild steel flats conforming to IS : 226-1975 or shall be of extruded aluminium alloy section ( see Fig. 2 ). The thickness of the sheet/flat shall be 3.15 mm. ’

( Page 7, foot-note with ‘ ‡ ’ mark ) — Substitute ‘ ( fifth revision ) ’ for ‘ ( fourth revision ) ’.

( Page 8, Fig. 2A ) — Substitute the following for the existing figure:



2A STEEL COUPLING BAR

( Page 16, Fig. 9 ) — Substitute ‘ 3.15 ’ for ‘ 3 ’ at both the places.

*Indian Standard*

**SPECIFICATION FOR STEEL WINDOWS  
FOR INDUSTRIAL BUILDINGS**

*( First Revision )*

**0. FOREWORD**

**0.1** This Indian Standard ( First Revision ) was adopted by the Indian Standards Institution on 20 February 1978, after the draft finalized by the Doors, Windows and Shutters Sectional Committee had been approved by the Civil Engineering Division Council.

**0.2** Indian Standards Institution has already issued IS : 1038-1975\* which covers steel doors, windows and ventilators for use in domestic buildings, such as residences, offices and schools. The range of sizes included in IS : 1038-1975\*, however, does not meet all the needs of industrial buildings, like factories and warehouses, where larger single units are generally required to be used. Although, it is possible to couple two or more units in the domestic range to form larger units, yet the increased weight and cost and the resulting type of openings make it necessary to evolve a separate range to cover specifically the requirements of windows for industrial buildings. This standard has been prepared with this object in view and, as in the case of IS : 1038-1975\*, the sizes of units have been derived on the basis of a 10-cm module and tolerances have been specified in accordance with IS : 1233-1969†.

**0.3** This standard was first published in 1959. In this revision reference to rolled steel sections used for fabrication of doors, windows and ventilators has been omitted and separately included in IS : 7452-1974‡. With regard to the clearance on all the four sides for the purpose of fitting the doors windows or ventilators into modular openings, in view of the difficulties experienced with the adoption of specified clearance the provisions have been modified to 10 mm allround. Accordingly, the manufacturing sizes of these components have been suitably modified. Consequential changes have also been incorporated in the sizes of glass panes.

---

\*Specification for steel doors, windows and ventilators ( *second revision* ).

†Recommendations for modular co-ordination of dimensions in the building industry ( *first revision* ).

‡Specification for hot rolled steel sections for doors, windows and ventilators.

**0.3.1** Another important modification incorporated in this revision relates to the process of welding permitted for corner joints. In this context, provisions have been made to permit any method of welding provided the joints conform to certain requirements as given in this standard.

**0.4** In the formulation of this standard due weightage has been given to international coordination among the standards and practices prevailing in different countries in addition to relating it to the practices in the field in this country.

**0.5** For the purpose of deciding whether a particular requirement of this standard is complied with, the final value, observed or calculated expressing the result of a test or analysis, shall be rounded off in accordance with IS : 2-1960\*. The number of significant places retained in the rounded off value should be the same as that of the specified value in this standard.

---

## **1. SCOPE**

**1.1** This standard deals with steel windows suitable for use in industrial buildings and designed to suit openings based on a module of 10 cm.

## **2. TERMINOLOGY**

**2.0** For the purpose of this standard, the following definitions shall apply.

**2.1 Sash** — A complete industrial window unit, whether of the fixed or opening type.

**2.2 Composite Window** — A window comprising of two or more sashes joined together with one or more coupling members.

**2.3 Ventilator** — The opening part of a sash. It consists of an inner frame and an outer frame.

**2.4 Centre-Hung Ventilator** — A ventilator horizontally pivoted at the centre of each side, with the top half opening inwards and the bottom half opening outwards.

**2.5 Bottom-Hung Ventilator** — A ventilator hinged at the bottom, and opening inwards.

**2.6 Top-Hung Ventilator** — A ventilator hinged at the top, and opening outwards.

---

\*Rules for rounding off numerical values (*revised*).

### 3. HANDING

**3.1** Handing and direction of closing of sashes shall be designated in accordance with IS : 4043-1969\*.

#### 4. DESIGNATION

**4.1** In designating the different sizes and types of industrial windows, the following notation shall be adopted:

$$\text{IN} \times \text{Width of window expressed in number of modules} \times \text{Type of window} \times \text{Height of window expressed in number of modules}$$

The letters IN indicate an industrial window; and the type of window is indicated by the following letter symbols:

F = Fixed sash,  
C = Centre-hung sash,  
B = Bottom-hung sash, and  
T = Top-hung sash.

*Examples:*

- 1) IN 10 C 15 indicates 'Industrial window for opening 10 module wide ( 100 cm ) by 15 module high ( 150 cm )' with centre-hung ventilator.
- 2) IN 16 F 10 indicates 'Industrial window for opening 16 module wide ( 160 cm ) by 10 module high ( 100 cm )' with fixed glass panes.

**4.2 Composite Windows** — For composite windows, the notations illustrated below shall be adopted:

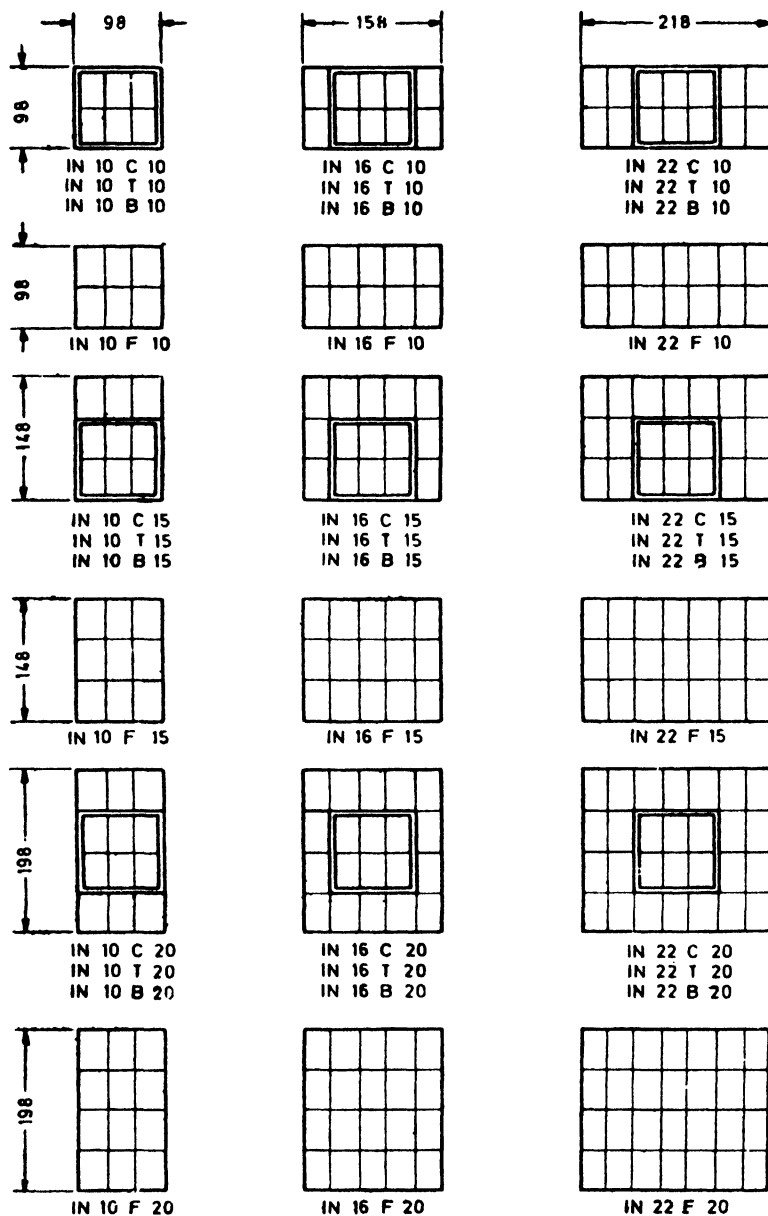
- a)  $\text{IN } 10 \text{ C } 10 / \text{IN } 10 \text{ C } 10 / \text{IN } 10 \text{ C } 10$ : This indicates three industrial windows of type IN 10 C 10, placed next to one another and coupled.
- b)  $\frac{\text{IN } 10 \text{ C } 10 / \text{IN } 10 \text{ C } 10}{\text{IN } 10 \text{ C } 15 / \text{IN } 10 \text{ C } 15}$ : This indicates the combination of four windows, two of the type IN 10 C 10 on top and two of the type IN 10 C 15 at the bottom, all the four of them coupled both horizontally and vertically.

## 5. STANDARD SIZES AND TOLERANCES

## 5.1 Sizes

**5.1.1** The type and sizes of industrial sashes shall be as given in Fig. 1.

\*Recommendations for symbolic designation of direction of closing and faces of doors, windows and shutters.



All dimensions in centimetres.  
FIG. 1 INDUSTRIAL SASHES

**5.1.2** The dimensions shown in Fig. 1 are overall heights and widths to the outside of frames of steel sashes. These sizes are derived after allowing 10 mm clearance on all the four sides for the purpose of fitting the sashes into modular openings.

**5.1.3** The ventilators shall be of one size and designed to fit into the outer frame of IN 10 C 10 and with 1.2 mm clearance.

**5.2 Tolerances** — The overall dimensions of industrial windows given in Fig. 1 shall not vary by more than 3 mm.

## 6. MATERIAL

**6.1** Rolled steel sections for the fabrication of industrial sashes shall conform to IS : 7452-1974\*. Steel used in the manufacture of these sections shall conform to IS : 1977-1969†.

**6.2** Cord-eyes, pulleys, brackets and catch plates for spring catches may be of malleable iron or mild steel.

**6.3** Pivots and spring catches shall be of non-ferrous metal. Coupling members for forming composite windows shall be fabricated either from steel conforming to IS : 226-1969‡ or shall be of extruded aluminium alloy section ( see Fig. 2 ).

**6.4** Glass panes shall weigh at least 7.5 kg/m<sup>2</sup> and shall be free from flaws, specks and bubbles. All glass panes shall have properly squared corners and straight edges.

### 6.5 Screws

**6.5.1** Screw threads of machine screws used in the manufacture of industrial sashes shall conform to the requirements of IS : 4218 ( Parts I to VI )-1967§.

**6.5.2** Wood screws used in the fixing of sashes shall conform to IS : 451-1972||.

**6.6** All bolts, nuts, screws, washers, peg stays and other mild steel fittings shall be suitably corrosion treated.

\*Specification for hot rolled steel sections, for doors, windows and ventilators.

†Specification for structural steel ( ordinary quality ) ( *first revision* ).

‡Specification for structural steel ( standard quality ) ( *fourth revision* ).

§Specification for ISO metric screw threads:

Part I Basic and design profiles

Part II Pitch diameter combinations

Part III Basic dimensions for design profiles

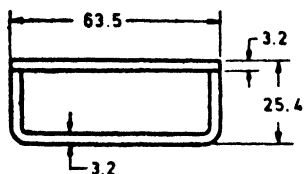
Part IV Tolerancing system

Part V Tolerances

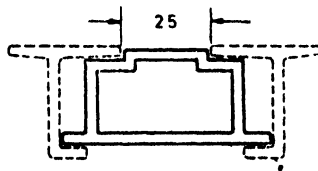
Part VI Limits of sizes for commercial bolts and nuts ( diameter range 1 to 39 mm ).

||Specification for technical supply condition for wood screws ( *second revision* ).

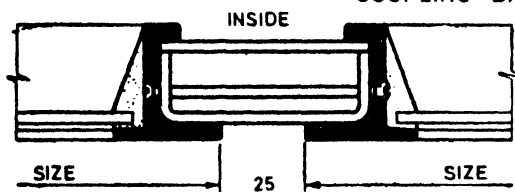




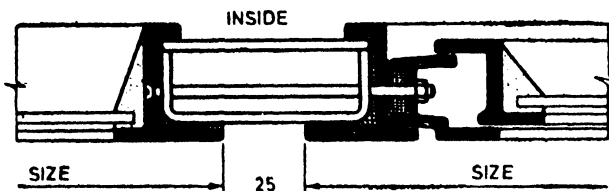
2A STEEL COUPLING BAR



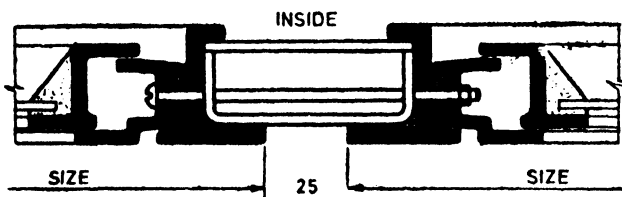
2B EXTRUDED ALUMINIUM ALLOY  
COUPLING BAR



2C COUPLING OF TWO FIXED SASHES



2D COUPLING OF A FIXED AND OPEN SASH



2E COUPLING OF TWO OPEN SASHES

All dimensions in millimetres.

FIG. 2 COUPLING DETAILS — HORIZONTAL AND VERTICAL

## 7. CONSTRUCTION

**7.1** Sashes shall be square and flat.

**7.2** Sashes shall be constructed of sections which have been cut to the required length and mitred. The corners of fixed and opening frames shall be welded to form a solid fused welded joint conforming to the requirements given in **7.2.1**. All frames shall be square and flat. The process of welding adopted may be flash butt welding or any other suitable method which gives the desired requirement.

### **7.2.1** *Requirements of Welded Joints*

**7.2.1.1** *Visual inspection test* — When two opposite corners of the frame are cut, paint removed and inspected, the joint shall conform to the following:

- a) Welds should have been made all along the place of meeting the members;
- b) Welds should have been properly ground; and
- c) Complete cross section of the corner shall be checked up to see that the joint is completely solid and there are no cavities visible.

**7.2.1.2** *Micro and macro examinations* — From the two opposite corners obtained for visual test as in **7.2.1.1**, the flanges of the sections shall be cut with the help of a saw. The cut surfaces of the remaining portions shall be polished, etched and examined.

The polished and etched faces of the weld and the base metal shall be free from cracks and reasonably free from under cutting, overlaps, gross porosity and entrapped slag.

**7.2.1.3** *Fillet weld test* — The fillet weld in the remaining portion of the joint obtained in **7.2.1.2**, shall be fractured by hammering. The fractured surfaces shall be free from slag inclusions, porosity, crack, penetration defects and fusion defects.

**7.3** Tee sections for glazing shall be tenoned and riveted into the frames and where they intersect, the vertical tie shall be broached and the horizontal tee threaded through it, and the intersection closed by hydraulic pressure.

**7.4** Ventilators, consisting of an inner opening frame and an outer fixed frame, shall be made as separate units which shall be bedded in mastic and screwed into the sash frames or tees with steel screws. The bars forming the vertical members of the inner and outer frames of centre-hung ventilators shall be reversed at the point of pivot; the top bars of inner and outer frames of top-hung ventilators, and the bottom bars of inner and outer frames of bottom-hung ventilators shall also be reversed (see Fig. 3).

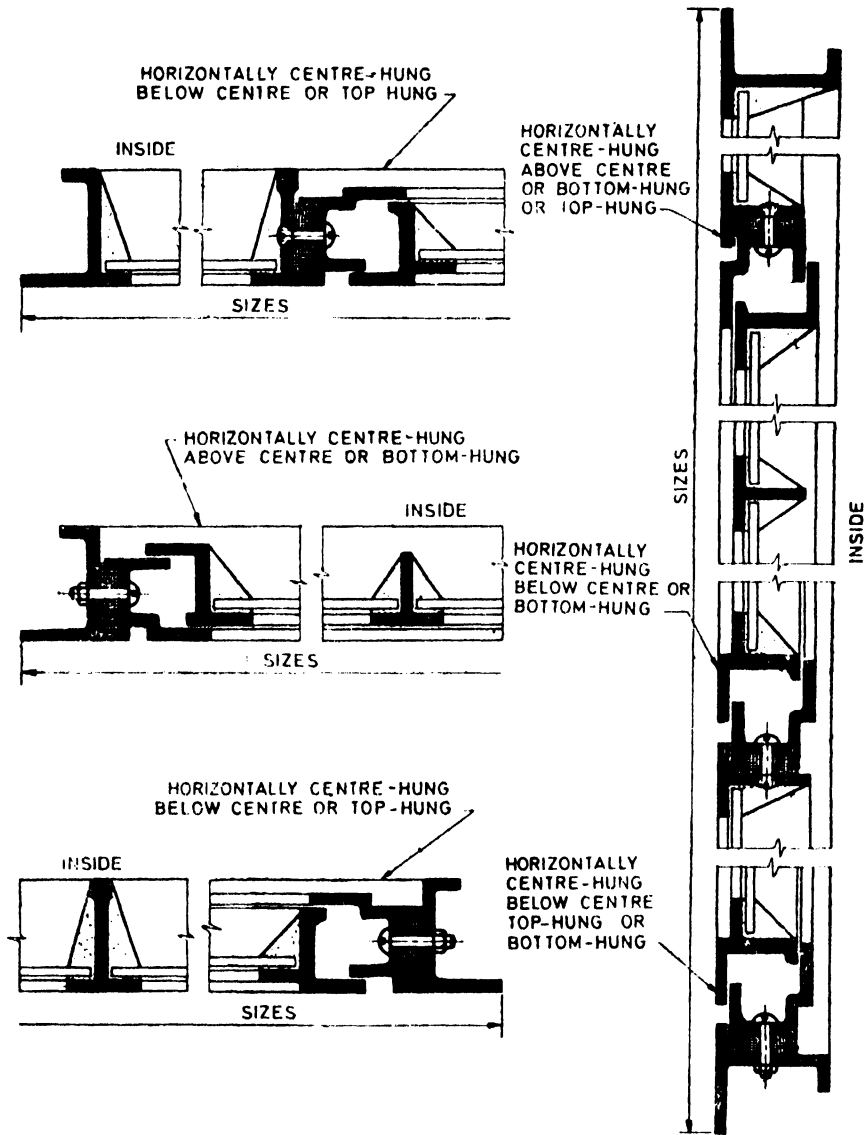


FIG. 3 SECTIONAL DETAILS THROUGH SASHES

## 8. HOLES FOR FIXING, COUPLING AND GLAZING

**8.1** Holes for fixing and coupling sashes shall be provided in the web of the outside frame sections ( and of outer ventilator frame sections where these occur at the perimeter of the sash ). These holes shall be of 8 mm diameter, countersunk, and shall be located 1.4 cm from the outside face of the frame section in positions shown in Fig. 4.

**8.2** Holes for glazing clips shall also be provided, one hole being located in the web of the section or tee, on each side of each pane.

## 9. FITTINGS AND FIXING MATERIALS

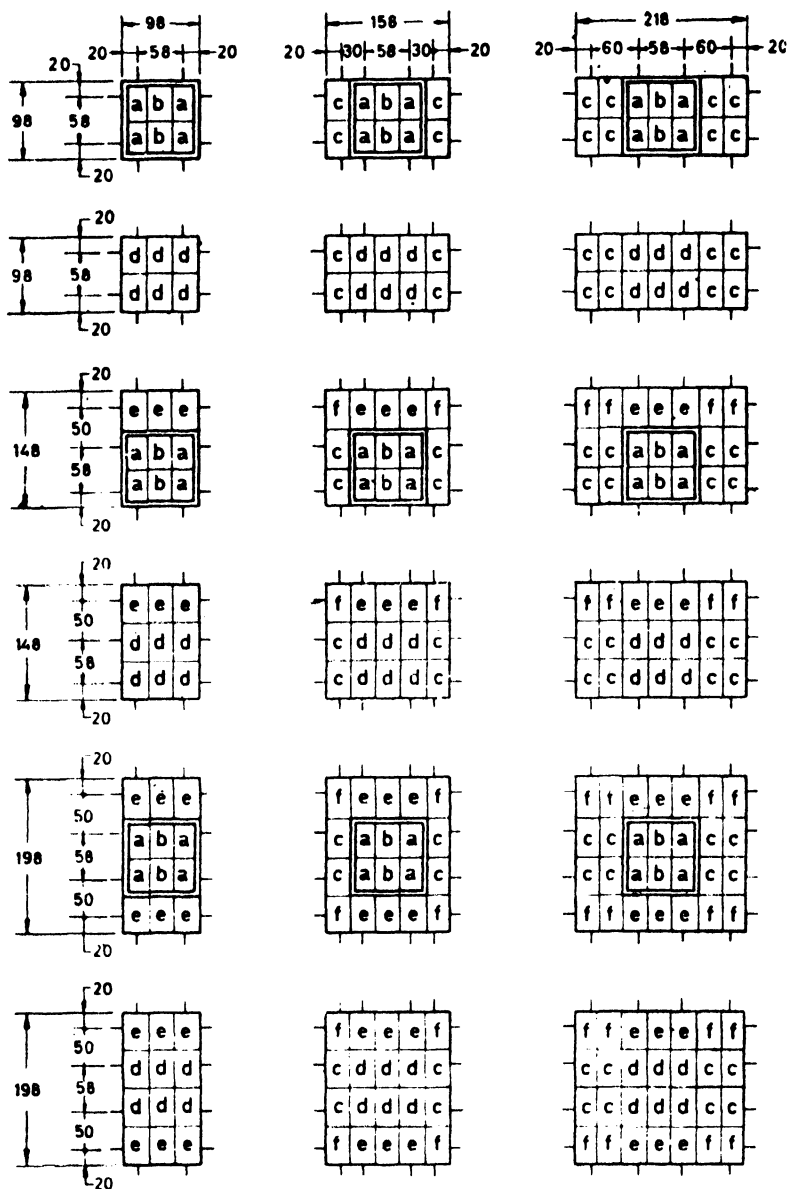
**9.1** Centre-hung ventilators shall be mounted on a pair of brass cup pivots, each pivot consisting of an inner and an outer cup, permitting the swinging of the ventilator through an angle of at least 85°, and so balanced that the ventilator shall be capable of remaining open in any desired position under normal conditions.

**9.2** Centre-hung ventilators shall be provided with a pulley ( consisting of a brass pulley-wheel in a mild steel or malleable iron bracket ) in the centre of the bottom section of the ventilator, and attached with brass or steel screws ( *see* Fig. 5 ). They shall also be provided with a mild steel or malleable iron cord-eye riveted or welded to the bottom inner frame section of the ventilator in a position corresponding to that of the pulley ( *see* Fig. 5 ).

**9.3** Centre-hung and bottom-hung ventilators shall have a bronze ( gunmetal ) spring catch in the centre of the top section of the ventilator, suitable for operation by hand or pole [ and by cord, in the case of centre-hung ventilators ( *see* Fig. 5 ) ]. This spring catch which shall be screwed to the frame with brass screws, shall close into a mild steel or malleable iron catch plate riveted or welded to the outside of the outer ventilator frame section.

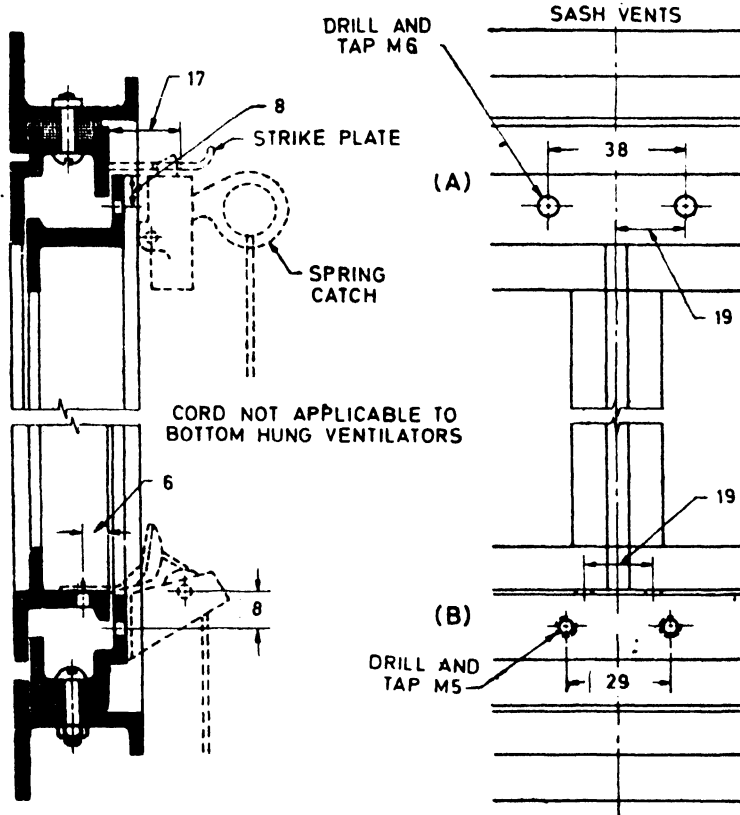
**9.4** Bottom-hung and top-hung ventilators shall be hung on strong hinges made of steel or malleable iron or of non-ferrous metal.

**9.5** Bottom-hung ventilators shall be provided with a pair of standardized steel or malleable iron folding side arms to limit the opening of the ventilator ( *see* Fig. 6 ). When the ventilator is closed, these side arms shall be invisible.



All dimensions in centimetres.

FIG. 4 FIXING HOLE CENTRES AND TYPES OF GLASS PANES



(A) Preparation for spring catch on horizontally pivoted and bottom hung ventilators

(B) Preparation for pulley and cord-eye on horizontally pivoted ventilators

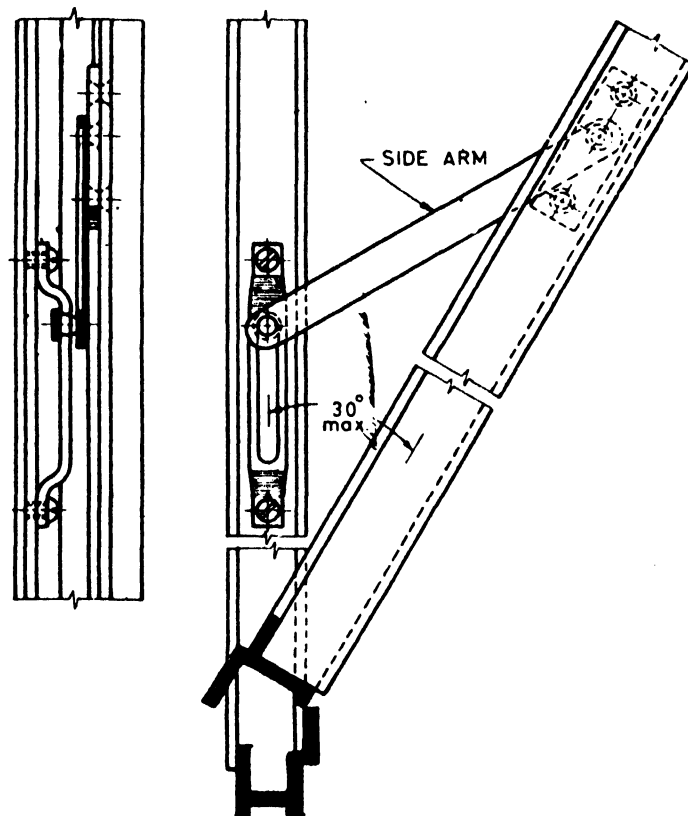
NOTE — Mastic should be applied to joints where hatching shown.

All dimensions in millimetres.

FIG. 5 SPRING CATCH, PULLEY AND CORD-EYE

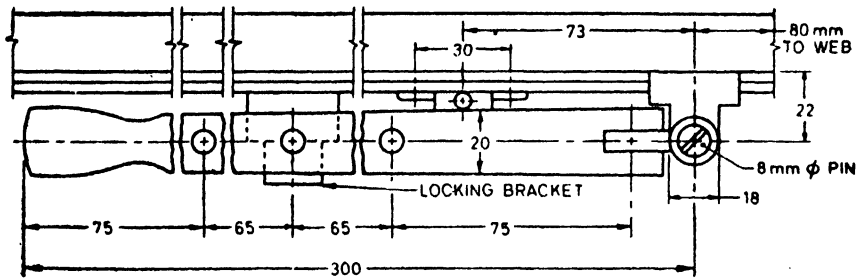
**9.6** Top-hung ventilators shall be provided with a 30 cm peg stay of steel or of non-ferrous metal, mounted on a jaw bracket of mild steel or malleable iron, welded or riveted to the bottom inner ventilator section and locking into a locking bracket of similar material welded or riveted to the

bottom inner or outer ventilator section, and with a sherardized steel or non-ferrous metal peg welded or riveted to the bottom outer ventilator section ( see Fig. 7 ).



**FIG. 6 FOLDING SIDE ARMS FOR BOTTOM-HUNG VENTILATORS**

**9.6.1** Alternatively, top-hung ventilators may be provided with a 30 cm bronze cam opener screwed to the ventilator with brass screws ( see Fig. 8 ).



All dimensions in millimetres.

FIG. 7 A TYPICAL PEG STAY FOR SIDE-HUNG SHUTTERS AND TOP HUNG VENTILATORS

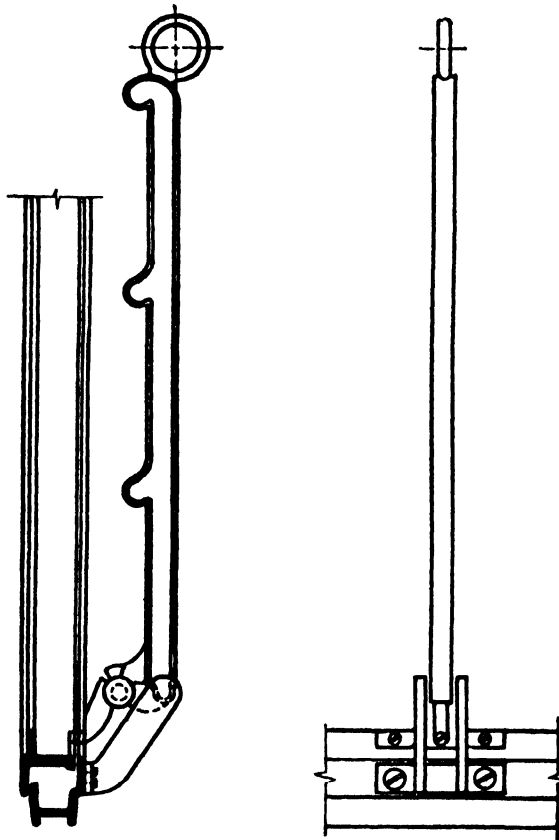


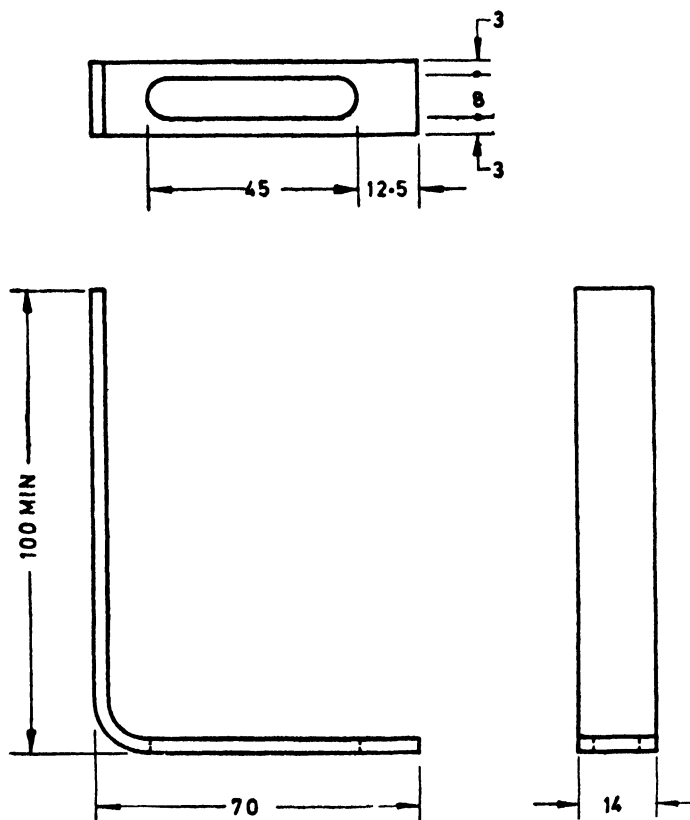
FIG. 8 CAM OPENER



**IS : 1361 - 1978**

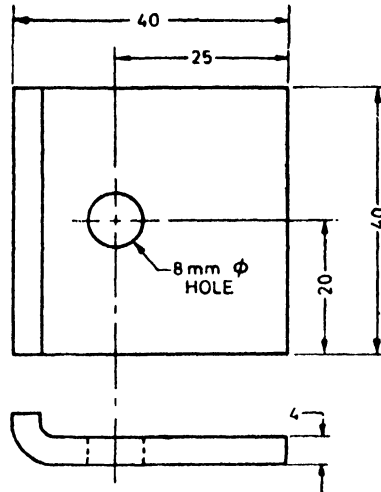
**9.6.2** Both peg stay and cam opener shall be capable of holding the ventilator open in three different positions.

**9.7** All sashes shall be provided with fixing fittings for the fixing holes shown in Fig. 4. These may be slotted reversible steel lugs ( holdfasts ) ( *see* Fig. 9 ) complete with countersunk steel nuts and bolts for fixing to brickwork; wood screws for fixing to wood, plugged concrete or stone; or steel screws, or mild steel fixing clips with steel nuts and bolts ( *see* Fig. 10 ) for fixing to steel.



All dimensions in millimetres.

**FIG. 9** SLOTTED FIXING LUG FOR BRICKWORK



All dimensions in millimetres.

FIG. 10 FIXING CLIP FOR STEEL WORK

**9.8** For coupling sashes with members specified to form composite windows, countersunk steel bolts and cone-nuts, of suitable length and in the quantities specified for fixing, shall be provided.

NOTE—Where ventilation occur, lug screws and coupling screws may be of round head type.

**9.9** Two spring glazing clips per pane shall be provided. These shall be made of spring steel to the design shown in Fig. 11.

## 10. COMPOSITE WINDOWS

**10.1** Composite windows shall be despatched unassembled, but complete with necessary coupling components. In composite windows each coupling member will increase the overall height or width by 20 mm maximum which includes manufacturing tolerances.

## 11. GLASS

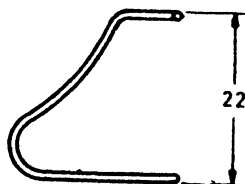
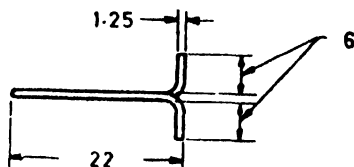
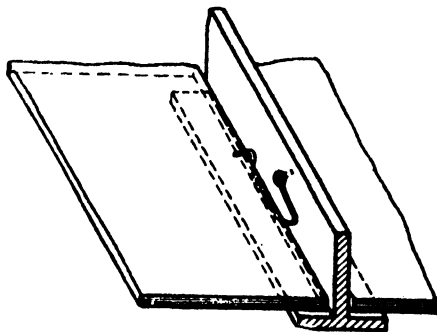
**11.1** The sizes of glass panes for windows shall be as given in Table 1. The sizes specified in the table include clearance. The number and sizes of glass panes for each type of window shall be as shown in Fig. 4.

## 12. FINISH

**12.1** All sashes and coupling members shall be either galvanized or painted. All steel surfaces shall be thoroughly cleaned free of rust, scale,

**IS : 1361 - 1978**

or dirt by pickling or phosphating and immediately painted with two coats of red oxide conforming to IS : 102-1962\* before despatch, or alternatively galvanized by the hot dip, zinc spray or electrogalvanizing process.



ENLARGED VIEW OF  
GLAZING CLIP

All dimensions in millimetres.

FIG. 11 SPRING STEEL GLAZING CLIP

\*Specification for ready mixed paint, brushing, red lead, nonsetting, priming (revised).

**TABLE 1 GLASS PANE SIZES**

( Clause 11.1 )

PANE DESIGNATION	WIDTH	HEIGHT
(1)	(2)	(3)
	mm	mm
a	269	425
b	304	425
c	292	460
d	304	460
e	304	492
f	292	492

**12.2** Material finished by hot-dip galvanizing shall be despatched unpainted. Zinc sprayed and electrogalvanized material shall be given one coat of red oxide paint.

**12.3** The thickness of zinc coating by hot-dip galvanizing or metal spray shall be uniform and not less than  $0.5 \text{ kg/m}^2$ .

### **13. MARKING**

**13.1** All industrial sashes shall carry an identification of the manufacturer or trade-mark, if any.

**13.1.1** The product may also be marked with Standard Mark.

**13.1.2** The use of the Standard Mark is governed by the provisions of the Bureau of Indian Standards Act, 1986 and the Rules and Regulations made thereunder. The details of conditions under which the licence for the use of Standard Mark may be granted to manufactures or producers may be obtained from the Bureau of Indian Standards.

### **14. PACKING**

**14.1** Industrial windows shall be despatched with the opening parts suitably secured to preserve alignment when fixing and glazing.

**14.2** Fixing lugs, coupling fittings and all hardware shall be despatched separately.

**14.3** Composite windows shall be despatched uncoupled.

## BUREAU OF INDIAN STANDARDS

### Headquarters:

Manak Bhavan, 9 Bahadur Shah Zafar Marg, NEW DELHI 110002

Telephones: 23230131, 23233375, 23239402

Fax: 91+011 23239399, 23239382

E-Mail : info@bis.org.in

website : <http://www.bis.org.in>

### Central Laboratory:

Plot No. 20/9, Site IV, Sahibabad Industrial Area, SAHIBABAD 201010

### Telephone

277 0032

### Regional Offices:

Central : Manak Bhavan, 9 Bahadur Shah Zafar Marg, NEW DELHI 110002

2323 7617

\*Eastern : 1/14 CIT Scheme VII M, V.I.P. Road, Kankurgachi, KOLKATA 700054

2337 8662

Northern : SCO 335-336, Sector 34-A, CHANDIGARH 160022

260 9285

Southern : C.I.T. Campus, IV Cross Road, CHENNAI 600113

2254 1984

†Western: Manakalaya, E9, MIDC, Behind Marol Telephone Exchange,  
Andheri (East), MUMBAI 400093

2832 9295

### Branch Offices:

'Pushpak', Nurmohamed Shaikh Marg, Khanpur, AHMEDABAD 380001

560 1348

Peenya Industrial Area, 1<sup>st</sup> Stage, Bangalore-Tumkur Road, BANGALORE

839 4955

Commercial-cum-Office Complex, Opp. Dushera Maidan, Arera Colony,  
Bittan Market, BHOPAL 462016

242 3452

62-63, Ganga Nagar, Unit VI, BHUBANESHWAR 751001

240 3139

5<sup>th</sup> Floor, Kovai Towers, 44 Bala Sundaram Road, COIMBATORE 641018

221 0141

SCO 21, Sector 12, Faridabad 121007

229 2175

Savitri Complex, 116 G.T. Road, GHAZIABAD 201001

286 1498

53/5 Ward No. 29, R.G. Barua Road, 5th By-lane, Apurba Sinha Path,  
GUWAHATI 781003

245 6508

5-8-56C, L.N. Gupta Marg, Nampally Station Road, HYDERABAD 500001

2320 1084

Prithavi Raj Road, Opposite Bharat Overseas Bank, C-Scheme, JAIPUR 302001

222 3282

11/418 B, Sarvodaya Nagar, KANPUR 208005

223 3012

Sethi Bhawan, 2<sup>nd</sup> Floor, Behind Leela Cinema, Naval Kishore Road,  
LUCKNOW 226001

261 8923

H. No. 15, Sector-3, PARWANOO, Distt. Solan (H.P.) 173220

235 436

Plot No A-20-21, Institutional Area, Sector 62, Goutam Budh Nagar, NOIDA 201307

240 2206

Patliputra Industrial Estate, PATNA 800013

226 2808

Plot Nos. 657-660, Market Yard, Gultkdi, PUNE 411037

2427 4804

"Sahajanand House" 3<sup>rd</sup> Floor, Bhaktinagar Circle, 80 Feet Road,  
RAJKOT 360002

237 8251

T.C. No. 2/275 (1 & 2), Near Food Corporation of India, Kesavadasapuram-Ulloor Road,  
Kesavadasapuram, THIRUVANANTHAPURAM 695004

255 7914

1<sup>st</sup> Floor, Udyog Bhavan, VUDA, Siripuram Junction, VISHAKHAPATNAM-03

271 2833

\*Sales Office is at 5 Chowringhee Approach, P.O. Princep Street, KOLKATA 700072

2355 3243

†Sales Office (WRO) Plot No. E-9, MIDC, Rd No. 8, Behind Telephone Exchange,  
Andheri (East), Mumbai-400 0093

2832 9295