

इंटरनेट

मानक

Disclosure to Promote the Right To Information

Whereas the Parliament of India has set out to provide a practical regime of right to information for citizens to secure access to information under the control of public authorities, in order to promote transparency and accountability in the working of every public authority, and whereas the attached publication of the Bureau of Indian Standards is of particular interest to the public, particularly disadvantaged communities and those engaged in the pursuit of education and knowledge, the attached public safety standard is made available to promote the timely dissemination of this information in an accurate manner to the public.

“जानने का अधिकार, जीने का अधिकार”

Mazdoor Kisan Shakti Sangathan

“The Right to Information, The Right to Live”

“पुराने को छोड़ नये के तरफ”

Jawaharlal Nehru

“Step Out From the Old to the New”

IS 2556-7 (1995): Vitreous Sanitary Appliances (vitreous china) - , Part 7: Specific Requirements of Accessories for Sanitary Appliances [CED 3: Sanitary Appliances and Water Fittings]



“ज्ञान से एक नये भारत का निर्माण”

Satyanarayan Gangaram Pitroda

“Invent a New India Using Knowledge”



“ज्ञान एक ऐसा खजाना है जो कभी चुराया नहीं जा सकता है”

Bhartrhari—Nitiśatakam

“Knowledge is such a treasure which cannot be stolen”

BLANK PAGE



IS 2556(Part7) : 1995
[Supersending IS 2556 (Part 10) : 1974
IS 2556 (Part 11) : 1979
IS 2556 (Part 12) : 1973
IS2556 (Part 13) : 1973]

(REAFFIRMED 2008)

भारतीय मानक
काँचाभ स्वच्छता साधित्र (काँचाभ चीनी मिट्टी)
विशिष्ट
भाग 7 काँचाभ स्वच्छता साधित्रों के सहायकांग की विशिष्ट अपेक्षाएँ
(तीसरा पुनरीक्षण)

Indian Standard
VITREOUS SANITARY APPLIANCES (VITREOUS
CHINA) — SPECIFICATION
PART 7 SPECIFIC REQUIREMENTS OF ACCESSORIES FOR SANITARY APPLIANCES
(Third Revision)

First Reprint OCTOBER 1997
(Incorporating Amendment No. I)

UDC 696.14:666.596

© BIS 1997

BUREAU OF INDIAN STANDARDS
MANAK BHAVAN, 9 BAHADUR SHAH ZAFAR MARG
NEW DELHI 110002

**AMENDMENT NO. 1 OCTOBER 1996
TO
IS 2556 (Part 7) : 1995 VITREOUS SANITARY
APPLIANCES (VITREOUS CHINA) — SPECIFICATION
PART 7 SPECIFIC REQUIREMENTS OF ACCESSORIES FOR
SANITARY APPLIANCES**

(Third Revision)

(Page 1, clause 2) — Substitute the following for the existing:

**'IS 9140 : 1996 Methods of sampling of vitreous and fire clay sanitary
appliances (*second revision*)'**

(Page 1, clause 8, line 3) — Substitute 'IS 9140 : 1996' for 'IS 9140 :
1995'.

(CED 3)

Reprography Unit, BIS, New Delhi, India

AMENDMENT NO. 2 DECEMBER 1998
TO
IS 2556 (Part 7) : 1995 VITREOUS SANITARY
APPLIANCES (VITREOUS CHINA) — SPECIFICATION
PART 7 SPECIFIC REQUIREMENTS OF ACCESSORIES FOR
SANITARY APPLIANCES

(Third Revision)

(Page 1, clause 4.2) — Insert a new clause 4.3 as follows:

'4.3 Except for functional dimensions, all other requirements as laid down in this standard shall be complied with.'

(Page 3, Fig. 2) — Insert a Note above Fig. 2 as follows:

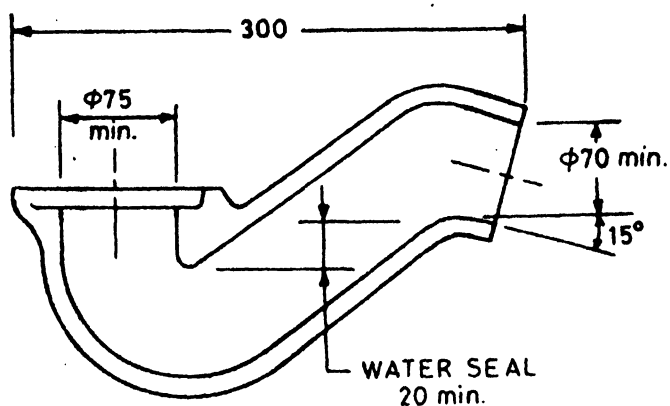
'NOTE — Fluting at the bottom of the channel is permissible.'

(CED 3)

AMENDMENT NO. 3 JUNE 2004
TO
IS 2556 (PART 7) : 1995 VITREOUS SANITARY
APPLIANCES (VITREOUS CHINA) — SPECIFICATION
PART 7 SPECIFIC REQUIREMENTS OF ACCESSORIES FOR
SANITARY APPLIANCES

(Third Revision)

(Page 4, Fig. 3B) — Substitute the following figure for the existing:



(CED 3) ,

FOREWORD

This Indian Standard (Third Revision) was adopted by the Bureau of Indian Standards, after the draft finalized by the Sanitary Appliances and Water Fittings Sectional Committee had been approved, by the Civil Engineering Division Council.

This standard was first published in 1963 and the first and second revision were issued in 1967 and 1973 respectively. In this third revision the accessories used with sanitary appliances namely footrests, shower rose, floortraps and traps for squatting pans, covered earlier under Parts 10, 11, 12 and 13 have been merged beside incorporating changes found necessary in the light of comments made by the users. Improvements made by the Sanitaryware Industry.

The composition of the technical committee responsible for the formulation of this standard is given in Annex A.

For the purpose of deciding whether a particular requirement of this standard is complied with, the final value, observed or calculated expressing the result of a test or analysis, shall be rounded off in accordance with IS 2:1960 'Rules for rounding off numerical values (*revised*)'. The number of significant places retained in the rounded off value should be the same as that of the specified value in this standard.

Indian Standard

VITREOUS SANITARY APPLIANCES (VITREOUS CHINA) — SPECIFICATION

PART 7 SPECIFIC REQUIREMENTS OF ACCESSORIES FOR SANITARY APPLIANCES

(Third Revision)

1 SCOPE

This standard (Part 7) covers the requirements for dimensions and tolerances, construction, finish, tests and marking of following accessories, made of vitreous china.

Half round channel,
Foot rest,
Traps for squatting pans,
Floor traps, and
Shower rose.

2 REFERENCES

The Indian Standards mentioned below are the necessary adjuncts to this standard:

IS No.	Title
2556	Specification for vitreous sanitary appliances:
(Part 1) : 1994	General requirements (<i>third revision</i>)
(Part 3) : 1994	Specific requirements of squatting pans (<i>fourth revision</i>)
9140 : 1996	Methods of sampling of vitreous and fire clay sanitary appliances (<i>second revision</i>)

3 GENERAL REQUIREMENTS

The general requirements relating to terminology, materials, manufacture and defects, minimum thickness, tolerances, finish, performance and method of tests covered in IS 2556 (Part 1) : 1994 shall be complied with.

4 DIMENSIONS

4.1 The accessories shall be of dimensions as shown in the respective figures, as follows:

Half round channel	Fig. 1
Foot rest	Fig. 2
Traps for squatting pans	Fig. 3

Floor traps Fig. 4

Shower rose Fig. 5

NOTE — The illustrations shown are only indicative of design.

4.2 Tolerance where not given for specific dimensions, shall conform to IS 2556 (Part 1) : 1994.

5 CONSTRUCTION

The accessories shall be of one piece construction.

NOTE — In case of floor trap (see Fig. 4), the grating (jali) is a separate piece.

6 FINISH

All the functional surfaces of the accessories, that is, those coming in contact with water shall be glazed uniform and smooth, in order to ensure an efficient function and use.

7 TESTS

7.1 Performance Test

The performance test is applicable only for shower rose (see Fig. 5). The shower rose when fitted at a height of 2 100 mm from the floor under a minimum of 3 m head shall wet a circular area having 450 mm as its minimum diameter on the floor.

7.2 Flushing Test

The flushing test is applicable only for traps for squatting pans (see Fig. 3). The flushing test shall be performed in accordance to the provisions stipulated in IS 2556 (Part 3) : 1994.

8 SAMPLING, PROGRESS INSPECTION AND LOT INSPECTION

The recommended method of sampling, process inspection and lot inspection shall be as given in IS 9140 : 1996

9 MARKING

9.1 Each piece of the accessories shall be

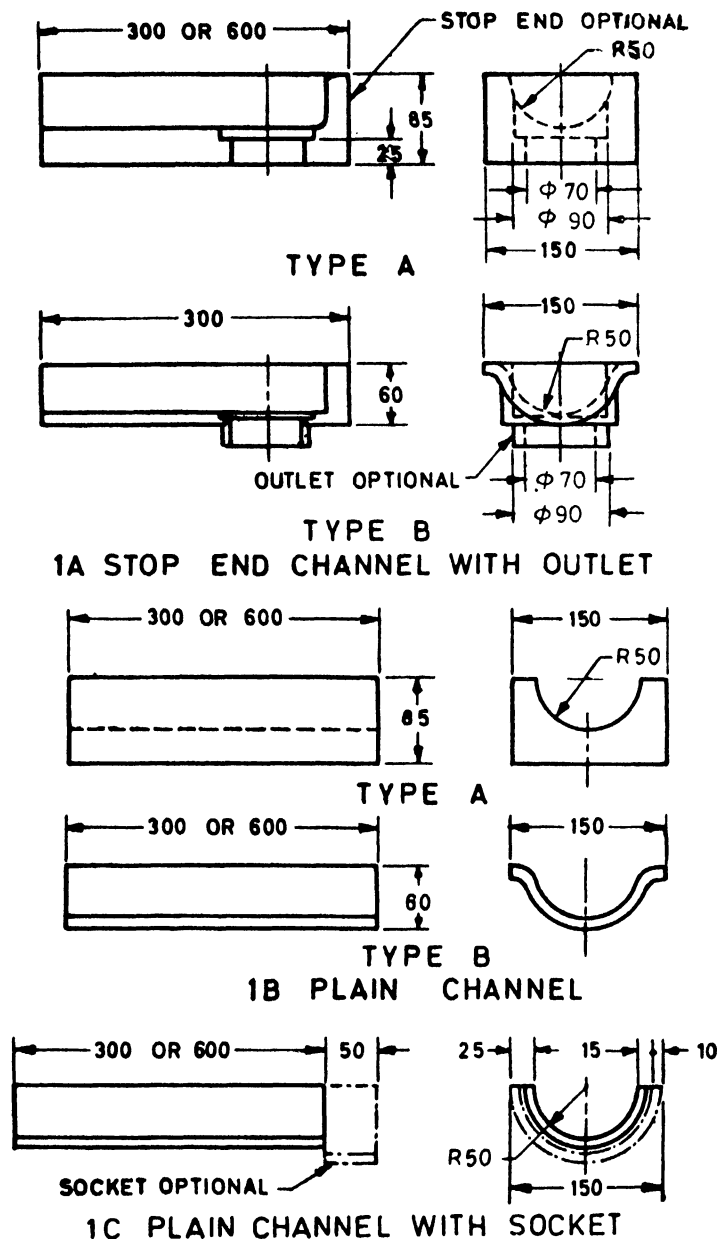
clearly and indelibly marked at a suitable place with the following:

- i) Name or trade-mark of the manufacturer; and
- ii) Batch/lot number.

9.2 BIS Certification Marking

9.2.1 The product may also be marked with the Standard Mark.

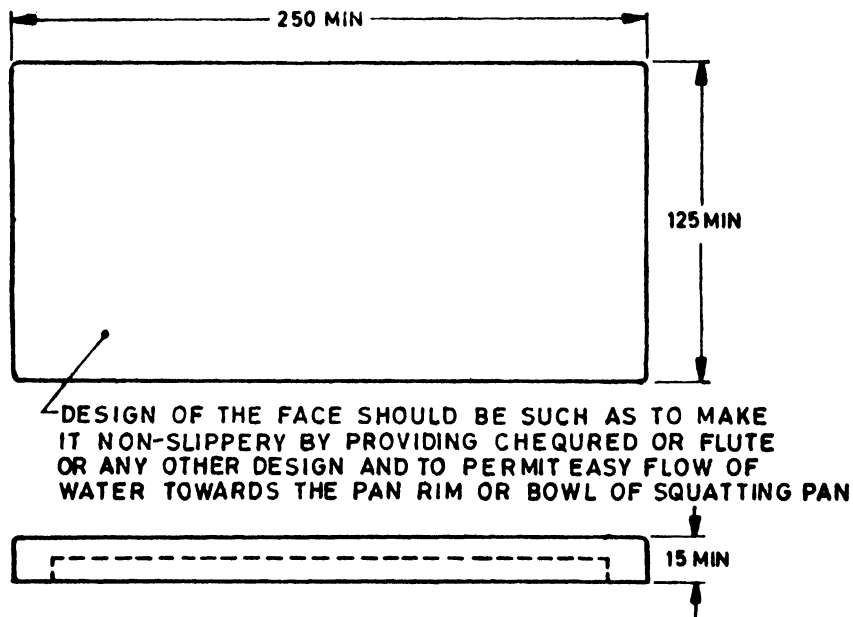
9.2.2 The use of Standard Mark is governed by the provisions of the Bureau of Indian Standards Act, 1986 and the Rules and Regulations made thereunder. Details of conditions under which a licence for the use of the Standard Mark may be granted to manufacturers or producers may be obtained from the Bureau of Indian Standards.



NOTE — Ovality is permissible within the variation allowed for the dimension.

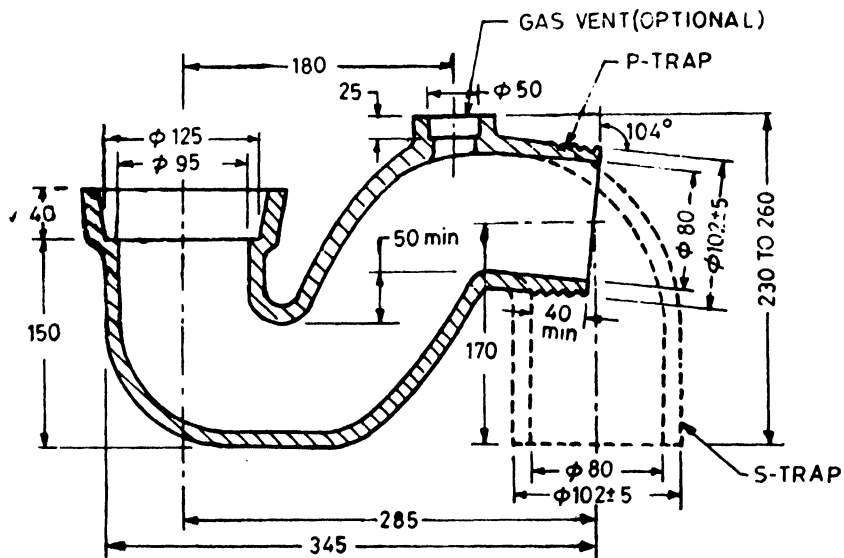
All dimensions in millimetres.

FIG. 1 HALF ROUND CHANNEL



All dimensions in millimetres.

FIG. 2 FOOT REST

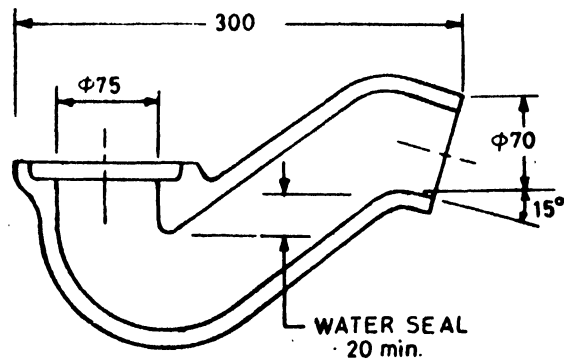


NOTE — Ovality permissible within the variation allowed for the dimensions.

All dimensions in millimetres.

3A Traps for Long Pattern and Orissa Pattern Pans

FIG. 3 TRAPS FOR SQUATTING PANS — Contd

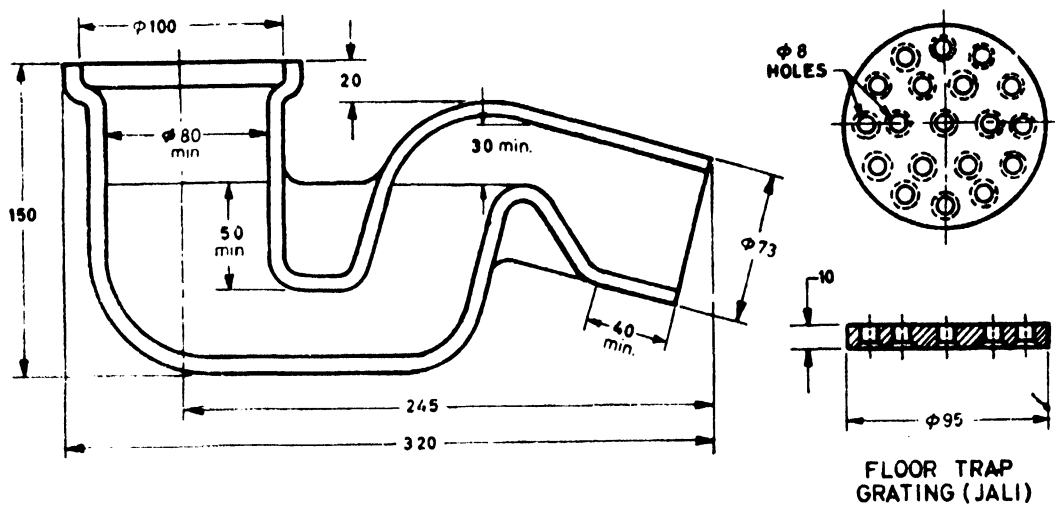


NOTE --- Ovality permissible within the variation allowed for the dimensions.

All dimensions in millimetres.

3B Trap for Rural Pattern Pan

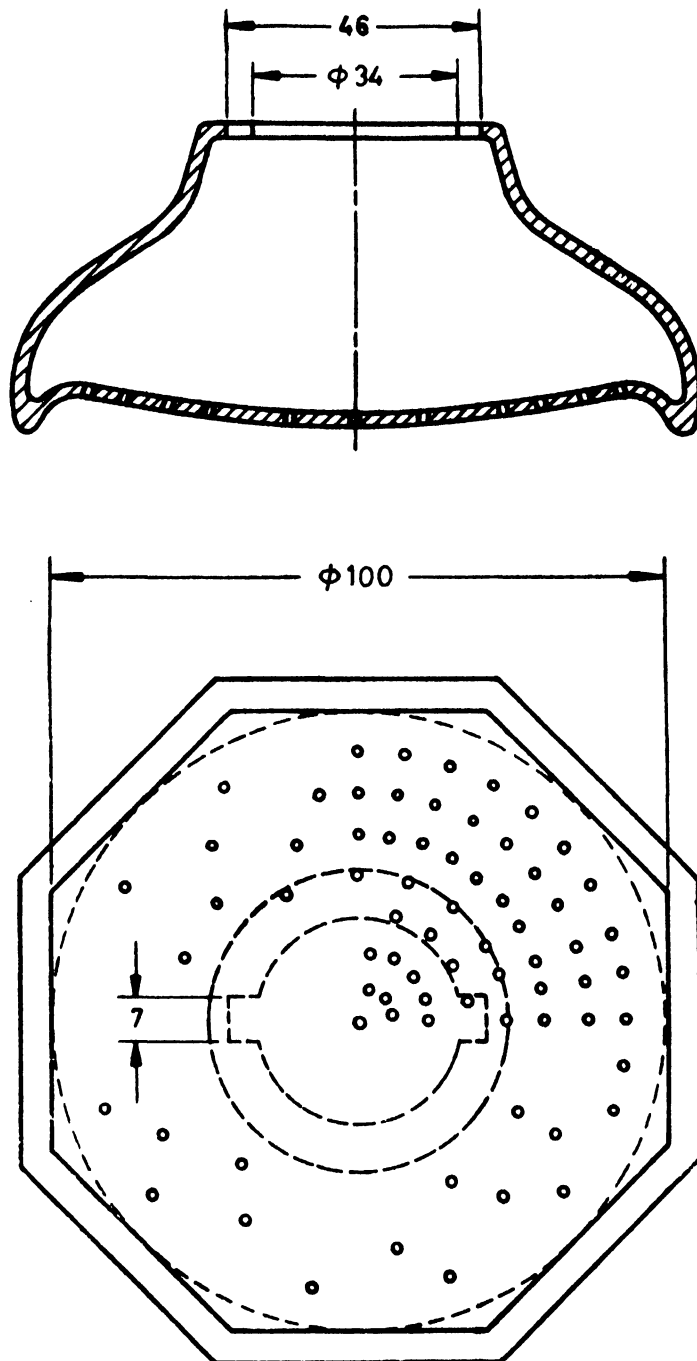
FIG. 3 TRAPS FOR SQUATTING PANS



NOTE — Ovality permissible within the variation allowed for the dimensions for inlet and outlet diameters.

All dimensions in millimetres.

FIG. 4 FLOOR TRAP



All dimensions in millimetres.

FIG. 5 TYPICAL ILLUSTRATION OF VITREOUS SHOWER ROSE

ANNEX A

(Foreword)

COMMITTEE COMPOSITION

Sanitary Appliances and Water Fittings Sectional Committee, CED 3

Chairman
SHRI S. PRAKASH

Members
SHRI P. K. JAIN (Alternate to
Shri S. Prakash)
THE ADVISER (PHE)
DEPUTY ADVISER (PHE) (Alternate)
SHRI J. R. AGGARWAL
SHRI SANJAY AGGARWAL (Alternate)
SHRI K. AUDISESHIAH
SHRI K. JAYAKANTH (Alternate)
SHRI VIDUR BHASKAR
SHRI ARUN KANTI BISWAS
SHRI K. B. CHOPRA
LT-COL G. T. KAUSHIK (Alternate I)
LT-COL S. K. SHARMA (Alternate II)
DR T. K. DAN
HYDRAULIC ENGINEER
DEPUTY HYDRAULIC ENGINEER (Alternate)
SHRI D. K. KANUNGO
SHRI R. KAPOOR (Alternate)
MANAGING DIRECTOR
CHIEF ENGINEER (PS & G) (Alternate)
SHRI K. LAKSHMI NARAYANA
SHRI A. SHARIFF (Alternate)
SHRI S. K. NEOGI
SHRI A. K. SENGUPTA (Alternate)
SHRI O. P. RATNA
SHRI R. S. ROTITHOR
SHRI S. D. JOSHI (Alternate)
SHRI D. K. SEHGAL
SHRI B. B. SIKKA (Alternate)
SENIOR CIVIL ENGINEER (WATER SUPPLY)
SHRI R. C. SHARMA
SHRI SUDESH KUMAR SHARMA
SHRI SURESH KUMAR SHARMA (Alternate)
SUPERINTENDING ENGINEER (TAC)
EXECUTIVE ENGINEER (TAC) (Alternate)
SHRI R. K. SOMANY
SHRI SANDIP SOMANY (Alternate)
SUPERINTENDING SURVEYOR OF WORKS (NDZ1)
SURVEYOR OF WORKS (NDZ1) (Alternate)
SHRI S. SUNDARAM
REPRESENTATIVE
REPRESENTATIVE
SECRETARY GENERAL
SHRI D. K. THOMBRE
SHRI J. R. MEHTA,
Director (Civ Engg)

Representing
Delhi Water Supply and Sewage Disposal Undertaking (MCD),
Delhi

Central Public Health and Environmental Engineering, New Delhi
M/s Goverdhan Das P. A., Calcutta
E. I. D. Parry (India) Ltd, Madras
Bhaskar Stoneware Pipes Pvt Ltd, Faridabad
National Environmental Engineering Research Institute (CSIR),
Nagpur
Engineer-in-Chief's Branch, Ministry of Defence, Army Head-
quarters, New Delhi

Central Glass and Ceramic Research Institute (CSIR), Calcutta
Municipal Corporation of Greater Bombay, Bombay

National Test House, Calcutta

Kerala Water Authority, Public Health Engineering Department,
Trivandrum

Hindustan Shipyard Ltd, Visakhapatnam

Institution of Public Health Engineers India, Calcutta

Building Material and Technology Promotion Council, New Delhi
M/s Kirloskar Brothers Limited, Pune

Leader Engineering Works, Jalandhar

Ministry of Railways (Railway Board), New Delhi
Directorate General of Supplies and Disposals, New Delhi
Central Building Research Institute, Roorkee

U. P. Jal Nigam, Lucknow

Hindustan Sanitaryware Industries Ltd, Bahadurgarh

Central Public Works Department, New Delhi

Glass Fibre Division, Ceat Ltd, Hyderabad
Central Institute of Plastic Engineering and Technology, Madras
Institution of Engineers (India), New Delhi
Indian Water Works Association, Bombay
Maharashtra Water Supply and Sewage Board, New Bombay
Director General, BIS (Ex-officio Member)

Member Secretaries
SHRI S. S. SETHI
Director (Civ Engg), BIS
and
SHRI R. S. JUNEJA
Joint Director (Civ Engg), BIS

(Continued on page 7)

(Continued from page 6)

Domestic Sanitary Appliances and Accessories Subcommittee, CED 3 : 1

<i>Condenser</i>	<i>Representing</i>
SHRI R. K. SOMANY	Hindustan Sanitaryware and Industries Ltd, Bahadurgarh
<i>Members</i>	
SHRI V. ANANTHANARAYANAN	East India Ceramics, Vellore, Tamil Nadu
CHIEF ENGINEER	Tamil Nadu Water Supply and Drainage Board, Madras
CHIEF ENGINEER (SEWERAGE)	Municipal Corporation of Greater Bombay, Bombay
DEPUTY CHIEF ENGINEER (Alternate)	
DR T. K. DAN	Central Glass and Ceramic Research Institute (CSIR), Calcutta
DEPUTY DIRECTOR	Directorate General of Supplies and Disposals, New Delhi
SHRI G. DHAMODARAM	E. I. D. Parry. (India) Ltd, Madras
SHRI V. GOPAL (Alternate)	
MANAGING DIRECTOR	Kerala Water Authority, Public Health Engineering Department, Trivandrum
DEPUTY CHIEF ENGINEER (WORKS)	Research Designs and Standards Organization, Lucknow
EXECUTIVE ENGINEER (WORKS) (Alternate)	
SHRI A. A. GANPULE	Parshuram Pottery Works Co, Thangadh
SHRI RAJENDRA KUMAR (Alternate)	
SHRI B. D. KOTHARI	Madhusudan Ceramics, New Delhi
SHRI S. RAMKUMAR (Alternate)	
SHRI B. S. MIRCHANDANI	Phenoweld Polymer Pvt Ltd, Bombay
SHRI P. R. GUPTA (Alternate)	
SHRI S. PRAKASH	Delhi Water Supply and Sewage Disposal Undertaking (MCD), New Delhi
SHRI S. S. RAMRAKBYANI (Alternate)	
SHRI Y. N. R. RAO	Engineer-in-Chief's Branch, Army Headquarters, New Delhi
MAJOR K. B. SINGH (Alternate)	
SHRI O. P. RATRA	Building Materials and Technology Promotion Council, New Delhi
SHRI U. SARKAR	Hindustan Sanitaryware and Industries Ltd, Bahadurgarh
SHRI V. K. JAIN (Alternate)	
SHRI SUDESH KUMAR SHARMA	Central Building Research Institute, Roorkee
SHRI SURESH KUMAR SHARMA (Alternate)	
SUPERINTENDING SURVEYOR OF WORKS (NDZ1)	Central Public Works Department, New Delhi
SURVEYOR OF WORKS (NDZ1) (Alternate)	

Bureau of Indian Standards

BIS is a statutory institution established under the *Bureau of Indian Standards Act*, 1986 to promote harmonious development of the activities of standardization, marking and quality certification of goods and attending to connected matters in the country.

Copyright

BIS has the copyright of all its publications. No part of these publications may be reproduced in any form without the prior permission in writing of BIS. This does not preclude the free use, in the course of implementing the standard, of necessary details, such as symbols and sizes, type or grade designations. Enquiries relating to copyright be addressed to the Director (Publications), BIS.

Review of Indian Standards

Amendments are issued to standards as the need arises on the basis of comments. Standards are also reviewed periodically; a standard along with amendments is reaffirmed when such review indicates that no changes are needed; if the review indicates that changes are needed, it is taken up for revision. Users of Indian Standards should ascertain that they are in possession of the latest amendments or edition by referring to the latest issue of 'BIS Handbook' and 'Standards : Monthly Additions'.

This Indian Standard has been developed from Doc : No. CED 03 (5331).

Amendments Issued Since Publication

Amend No.	Date of Issue	Text Affected

BUREAU OF INDIAN STANDARDS

Headquarters:

Manak Bhavan, 9 Bahadur Shah Zafar Marg, New Delhi 110002
Telephones : 323 01 31, 323 94 02, 323 33 75

Telegrams: Manaksanstha
(Common to
all offices)

Regional Offices:

Central : Manak Bhavan, 9 Bahadur Shah Zafar Marg
NEW DELHI 110002

Telephone

{ 323 76 17
323 38 41

Eastern : 1/14 C. I. T. Scheme VII M, V. I. P. Road, Maniktola
CALCUTTA 700054

{ 337 84 99, 337 85 61
337 86 26, 337 86 62

Northern : SCO 335-336, Sector 34-A, CHANDIGARH 160022

{ 60 38 43
60 20 25

Southern : C. I. T. Campus, IV Cross Road, CHENNAI 600113

{ 235 02 16, 235 04 42
235 15 19, 235 23 15

Western : Manakalaya, E9 MIDC, Marol, Andheri (East)
MUMBAI 400093

{ 832 92 95, 832 78 58
832 78 91, 832 78 92

Branches : AHMADABAD. BANGALORE. BHOPAL. BHUBANESHWAR.
COIMBATORE. FARIDABAD. GHAZIABAD. GUWAHATI. HYDERABAD. JAIPUR.
KANPUR. LUCKNOW. NAGPUR. PATNA. PUNE. THIRUVANANTHAPURAM.