

इंटरनेट

मानक

Disclosure to Promote the Right To Information

Whereas the Parliament of India has set out to provide a practical regime of right to information for citizens to secure access to information under the control of public authorities, in order to promote transparency and accountability in the working of every public authority, and whereas the attached publication of the Bureau of Indian Standards is of particular interest to the public, particularly disadvantaged communities and those engaged in the pursuit of education and knowledge, the attached public safety standard is made available to promote the timely dissemination of this information in an accurate manner to the public.

“जानने का अधिकार, जीने का अधिकार”

Mazdoor Kisan Shakti Sangathan

“The Right to Information, The Right to Live”

“पुराने को छोड़ नये के तरफ”

Jawaharlal Nehru

“Step Out From the Old to the New”

IS 2133 (1983): wooden tent pins [CED 9: Timber and Timber Stores]



“ज्ञान से एक नये भारत का निर्माण”

Satyanarayan Gangaram Pitroda

“Invent a New India Using Knowledge”



“ज्ञान एक ऐसा खजाना है जो कभी चुराया नहीं जा सकता है”

Bhartrhari—Nitiśatakam

“Knowledge is such a treasure which cannot be stolen”

BLANK PAGE



Indian Standard

SPECIFICATION FOR WOODEN TENT PINS

(*Second Revision*)

First Reprint FEBRUARY 1996

UDC 685.531.055:621.886.1:674.06

© Copyright 1983

BUREAU OF INDIAN STANDARDS
MANAK BHAVAN, 9 BAHADUR SHAH ZAFAR MARG
NEW DELHI 110002

Indian Standard

SPECIFICATION FOR WOODEN TENT PINS

(Second Revision)

Timber Stores Sectional Committee, BDC 33

Chairman

DR A. N. NAYER
C-59 Inderpuri, New Delhi 110012

Members

SHRI S. K. CHANDA

SHRI S. N. DHIR

DIRECTOR (TRACK)

JOINT DIRECTOR, CE (TM) (*Alternate*)

SHRI D. P. GHOSH

SHRI NIRMAL SINGH (*Alternate*)

SHRI M. L. JAIN

SHRI P. K. JAIN (*Alternate*)

SHRI J. S. MATHARU

SHRI P. V. MEHTA (*Alternate*)

SHRI S. K. NAG

SHRI PRAKASH AGARWAL

SHRI S. N. SANYAL

OFFICER-IN-CHARGE (WOOD

SEASONING BRANCH) (*Alternate*)

OFFICER-IN-CHARGE (WOOD

PRESERVATION BRANCH) (*Alternate*)

SHRI SATYA NARAIN GARG

SHRI SURESH NARAIN GARG (*Alternate*)

SHRI SHARAN SINGH

SHRI M. B. SINGH

SHRI U. B. KANCHAN (*Alternate*)

SO1/E3ES

SO2/E3ES (*Alternate*)

SUPERINTENDING SURVEYOR OF
WORKS (NZ)

SURVEYOR OF WORKS II (NZ) (*Alternate*)

SHRI G. RAMAN,

Director (Civ Engg)

Representing

The Industrial Wood Works (Pvt) Ltd, Calcutta

In personal capacity (156 Rajpur Road, Dehra Dun)

Railway Board (Ministry of Railways)

Ministry of Defence (DGI)

Jaynes Cheap Stores Supply Co, Delhi

Directorate General of Technical Development,
New Delhi

Rekha Timber Co, Calcutta

Wood Preservers (P) Ltd, Nagpur

Forest Research Institute & Colleges, Dehra Dun

Govind Narain & Bros, Kanpur

Directorate General of Supplies and Disposals,
New Delhi

Ministry of Defence (R & D)

Directorate General of Border Roads, New Delhi

Central Public Works Department, New Delhi

Director General, ISI (*Ex-officio Member*)

Secretary

SHRI VIJAY RAJ
Assistant Director (Civ Engg), ISI

© Copyright 1983

BUREAU OF INDIAN STANDARDS

This publication is protected under the *Indian Copyright Act* (XIV of 1957) and reproduction in whole or in part by any means except with written permission of the publisher shall be deemed to be an infringement of copyright under the said Act.

Indian Standard

SPECIFICATION FOR WOODEN TENT PINS

(Second Revision)

0. FOREWORD

0.1 This Indian Standard (Second Revision) was adopted by the Indian Standards Institution on 22 February 1983, after the draft finalized by the Timber Stores Sectional Committee had been approved by the Civil Engineering Division Council.

0.2 Large quantities of wooden tent pins of various sizes are used for tying ropes for pitching tents and the demand is on the increase. A variety of sizes and qualities are being manufactured, making it difficult for consumers to select the correct size and quality for their purpose. Moreover, in view of the acute shortage of timber in the country for constructional and other essential needs, economy in the use of timber for wooden tent pins is a very important consideration as these pins are required in millions. This standard has, therefore, been prepared with the object of standardizing the sizes to ease manufacture and effect economy in the use of timber without loss of efficiency.

0.3 This standard was first published in 1962 wherein only round tent pins were specified. Based on the comments of the users octagonal shaped tent pins were included in the standard in its first revision issued in 1978. In this revision, two types of tent pins have been covered; one with a metallic shoe and band and the other without them.

0.4 In the formulation of this standard due weightage has been given to international co-ordination among the standards and practices prevailing in different countries in addition to relating it to the practices in the field in this country.

0.5 For the purpose of deciding whether a particular requirement of this standard is complied with, the final value, observed or calculated, expressing the result of a test or analysis, shall be rounded off in accordance with IS : 2-1960*. The number of significant places retained in the rounded off value should be the same as that of the specified value in this standard.

*Rules for rounding off numerical values (*revised*).

1. SCOPE

1.1 This standard covers the requirements of two types and three sizes of wooden tent pins, used for pitching various general types of tents.

2. TERMINOLOGY

2.0 For the purpose of this standard, the definitions given in IS : 707-1976* shall apply.

3. TYPES

3.1 Wooden tent pins shall be of the following two types:

- a) *Type I* — These shall be without metallic band and shoe and shall be in accordance with the shapes and design as shown in Fig. 1, and
- b) *Type II* — These shall be fitted with metallic band and shoe and shall be in accordance with the shapes and design as shown in Fig. 2.

4. MATERIAL

4.1 Tent pins shall be manufactured from any species of timber given in Appendix A.

4.2 The timber shall be seasoned to a moisture content not exceeding 20 percent and the inclination of grain shall not exceed 1 in 15. It shall be free from centre-heart (pith), any kind of decay (rot), shakes, live insect attack, knots (except live pin knots), splits (except hair cracks) and warp.

5. MANUFACTURE

5.1 Unless otherwise specified, the pins may be manufactured either in round form or in octagonal shape and design as shown in Fig. 1 and 2.

5.1.1 In the case of octagonal shape of tent pins, all the eight sides shall, as far as possible, be of the same width.

5.2 The notch shall be accurately and cleanly cut.

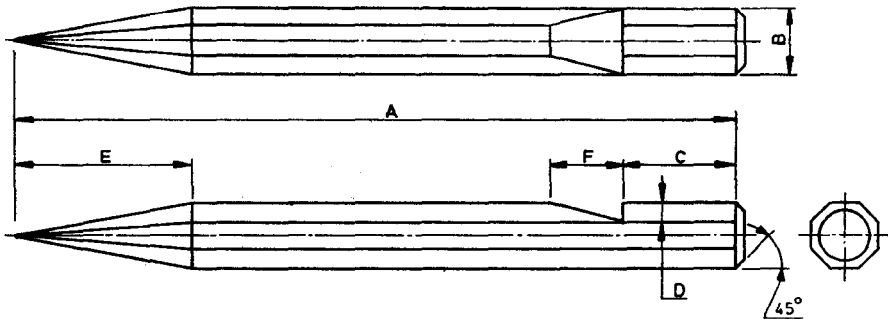
6. DIMENSIONS AND TOLERANCES

6.1 Dimensions — The pins shall conform to the dimensions as shown in Fig. 1 and 2.

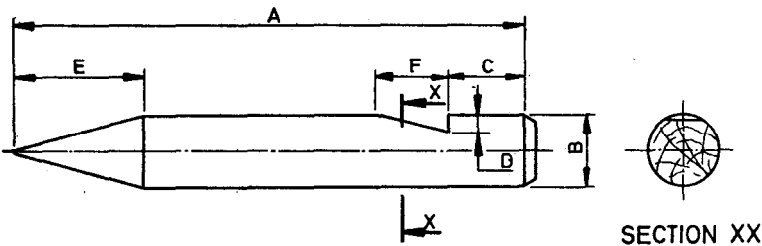
*Glossary of terms applicable to timber technology and utilization (*second revision*).

6.2 Tolerances — The permissible tolerances on dimensions shall be as shown in Fig. 1 and 2.

6.2.1 Where tolerances on dimensions are not shown, normal manufacturing tolerances shall be permissible.



1A OCTAGONAL SHAPE

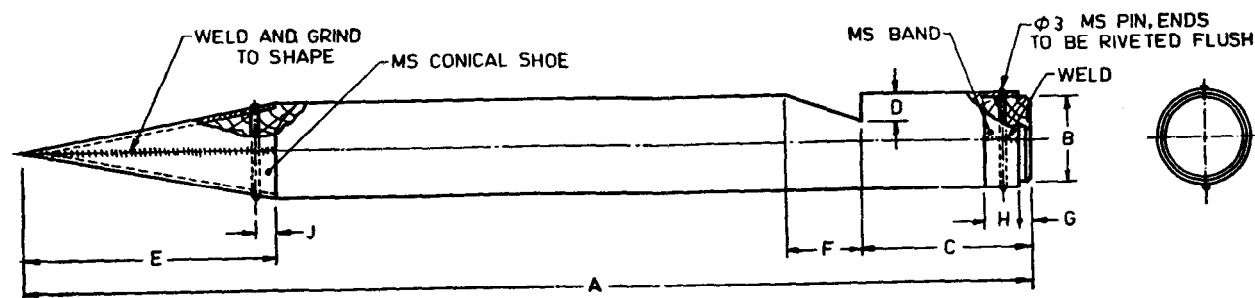


1B ROUND SHAPE

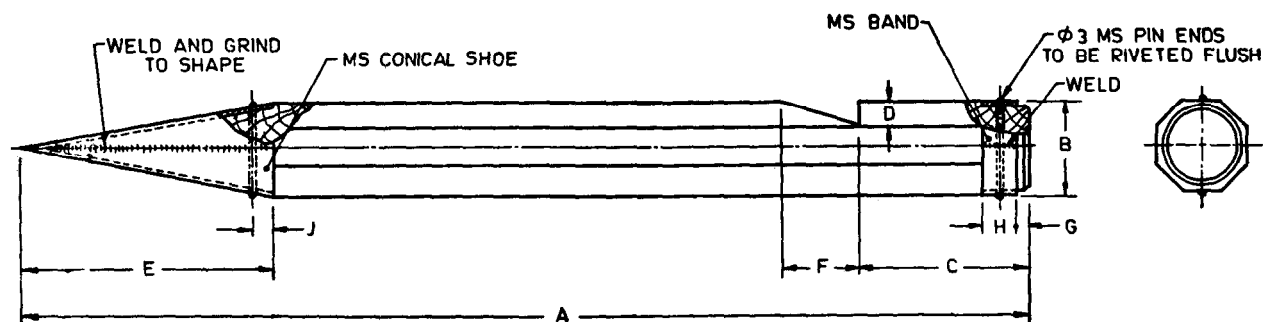
SIZE	A	B	C	D	E	F
Large	600 ± 15	55 ± 3	100 ± 5	15 ± 2	150 ± 5	45 ± 5
Medium	450 ± 10	45 ± 3	75 ± 5	10 ± 2	110 ± 5	45 ± 5
Small	300 ± 10	40 ± 3	50 ± 5	10 ± 2	75 ± 5	40 ± 5

All dimensions in millimetres.

FIG. 1 WOODEN TENT PINS — TYPE I



2A Round Shape



2B Octagonal Shape

SIZE	A	B	C	D	E	F	G	H	J	THICKNESS OF SHEET FOR SHOE AND BAND
LARGE	600 ± 15	55 ± 5	100 ± 5	15 ± 2	150 ± 5	45 ± 5	6 ± 1	20 ± 2	25 ± 5	1.6
MEDIUM	450 ± 10	45 ± 5	75 ± 5	10 ± 2	110 ± 5	45 ± 5	6 ± 1	15 ± 2	20 ± 5	1.6
SMALL	300 ± 10	40 ± 5	50 ± 5	10 ± 2	75 ± 5	40 ± 5	5 ± 1	15 ± 2	15 ± 3	1.6

NOTE — Thickness of mild steel sheet for shoe as well as band shall be 1.6 mm.

All dimensions in millimetres.

FIG. 2 WOODEN TENT PINS — TYPE II

As in the Original Standard, this Page is Intentionally Left Blank

7. WORKMANSHIP AND FINISH

7.1 Pins shall be reasonably smooth all over.

8. PRESERVATION

8.1 Unless otherwise specified, the pins shall be preserved by complete immersion in 50 percent (*v/v*) mixture of creosote Type 1 (conforming to IS : 218-1961*) and fuel oil of grade L. V. (conforming to IS : 1593-1971†) or any other oil of equivalent viscosity maintained at a temperature of $95 \pm 5^{\circ}\text{C}$ for a minimum period of 15 minutes immediately followed by complete immersion in the above mixture at room temperature for a minimum period of 30 minutes. Alternatively, the pins may be treated by complete immersion in the above mixture for a minimum period of 8 hours at room temperature.

8.2 Before fixing, the band and shoes (free from rust) shall be painted with ready mixed paint, air drying, red oxide-zinc chrome, priming, conforming to IS : 2074-1979‡.

9. MARKING

9.1 Each pin shall be legibly and indelibly marked with the manufacturer's name or initials or recognized trade-mark and the year of manufacture.

9.1.1 Each pin may also be marked with the ISI Certification Mark.

NOTE — The use of the ISI Certification Mark is governed by the provisions of the Indian Standards Institution (Certification Marks) Act and the Rules and Regulations made thereunder. The ISI Mark on products covered by an Indian Standard conveys the assurance that they have been produced to comply with the requirements of that standard under a well-defined system of inspection, testing and quality control which is devised and supervised by ISI and operated by the producer. ISI marked products are also continuously checked by ISI for conformity to that standard as a further safeguard. Details of conditions under which a licence for the use of the ISI Certification Mark may be granted to manufacturers or processors, may be obtained from the Indian Standards Institution.

*Specification for creosote and anthracene oil for use as wood preservatives (*revised*).

†Specification for fuel oils (*first revision*).

‡Specification for ready-mixed paint, air drying, red oxide-zinc chrome, priming (*first revision*).

APPENDIX A

(Clause 4.1)

SPECIES OF TIMBER SUITABLE FOR WOODEN TENT PINS

TRADE NAME	BOTANICAL NAME
Amari	<i>Amoora</i> spp.
Anjan	<i>Hardwickia binata</i>
Arjun	<i>Terminalia arjuna</i>
Axlewood (Bakli)	<i>Anogeissus latifolia</i>
Babul	<i>Acacia nilotica</i> (Syn. <i>A. arabica</i>)
Ballagi	<i>Poeciloneuron indicum</i>
Bijasal	<i>Pterocarpus marsupium</i>
Black chuglam	<i>Terminalia mannii</i>
Bulletwood	<i>Manilkara</i> spp.
Casuarina	<i>Casuarina equisetifolia</i>
Dhaman	<i>Grewia tiliifolia</i>
Hopea	<i>Hopea</i> spp. (other than <i>Hopea odorata</i>)
Imli	<i>Tamarindus indica</i>
Indian oak	<i>Quercus</i> spp.
Irul	<i>Xylia xylocarpa</i>
Jaman	<i>Syzygium</i> spp.
Jutili	<i>Altingia excelsa</i>
Kardhai	<i>Anogeissus pendula</i>
Kindal	<i>Terminalia paniculata</i>
Kumbi	<i>Careya arborea</i>
Kusum	<i>Schleichera oleosa</i> (Syn. <i>S. trijuga</i>)
Lal-khair	<i>Acacia chundra</i>
Laurel	<i>Terminalia alata</i> (Syn. <i>T. coriacea</i> ., <i>T. crenulata</i>)
Mahua	<i>Madhuca longifolia</i>
Mesua	<i>Mesua ferrea</i>
Milla	<i>Vitex</i> spp.
Ping	<i>Maniltoa polyandra</i> (Syn. <i>Cynometra Polyandra</i>)
Rajbrikh	<i>Cassia fistula</i>
Red-bombwe	<i>Planchonia valida</i> (Syn. <i>P. aandamanica</i>)
Sal	<i>Shorea robusta</i>
Sandan	<i>Ougeinia oojeinensis</i> (Syn. <i>O. dalbergioides</i>)
Satinwood	<i>Chloroxylon swietenia</i>
Sissoo	<i>Dalbergia sissoo</i>
Sundri	<i>Heritiera</i> spp.
Yon	<i>Anogeissus acuminata</i>

BUREAU OF INDIAN STANDARDS

Headquarters:

Manak Bhavan, 9 Bahadur Shah Zafar Marg, NEW DELHI 110002

Telephones: 331 01 31, 331 13 75

Telegrams: Manaksanstha
(Common to all Offices)

Regional Offices:

	Telephone
Central : Manak Bhavan, 9 Bahadur Shah Zafar Marg, NEW DELHI 110002	{ 331 01 31 331 13 75
*Eastern : 1/14 C. I. T. Scheme VII M, V. I. P. Road, Maniktola, CALCUTTA 700054	36 24 99
Northern : SCO 445-446, Sector 35-C, CHANDIGARH 160036	{ 2 18 43 3 16 41
Southern : C. I. T. Campus, MADRAS 600113	{ 41 24 42 41 25 19 41 29 16
†Western : Manakalaya, E9 MIDC, Marol, Andheri (East), BOMBAY 400093	6 32 92 95

Branch Offices:

'Pushpak', Nurmohamed Shaikh Marg, Khanpur, AHMADABAD 380001	{ 2 63 48 2 63 49
‡Peenya Industrial Area 1st Stage, Bangalore Tumkur Road BANGALORE 560058	{ 38 49 55 38 49 56
Gangotri Complex, 5th Floor, Bhadbhada Road, T. T. Nagar, BHOPAL 462003	6 67 16
Plot No. 82/83, Lewis Road, BHUBANESHWAR 751002	5 36 27
53/5, Ward No. 29, R.G. Barua Road, 5th Byelane, GUWAHATI 781003	3 31 77
5-8-56C L. N. Gupta Marg (Nampally Station Road), HYDERABAD 500001	23 10 83
R14 Yudhister Marg, C Scheme, JAIPUR 302005	{ 6 34 71 6 98 32
117/418 B Sarvodaya Nagar, KANPUR 208005	{ 21 68 76 21 82 92
Patliputra Industrial Estate, PATNA 800013	6 23 05
T.C. No. 14/1421, University P.O., Palayam TRIVANDRUM 695035	{ 6 21 04 6 21 17

Inspection Offices (With Sale Point):

Pushpanjali, First Floor, 205-A West High Court Road, Shankar Nagar Square, NAGPUR 440010	2 51 71
Institution of Engineers (India) Building, 1332 Shivaji Nagar, PUNE 411005	5 24 35

*Sales Office in Calcutta is at 5 Chowringhee Approach, P. O. Princep Street, Calcutta 700072

†Sales Office in Bombay is at Novelty Chambers, Grant Road, 89 65 28
Bombay 400007

‡Sales Office in Bangalore is at Unity Building, Narasimharaja Square, 22 36 71
Bangalore 560002

Reprography Unit, BIS, New Delhi, India